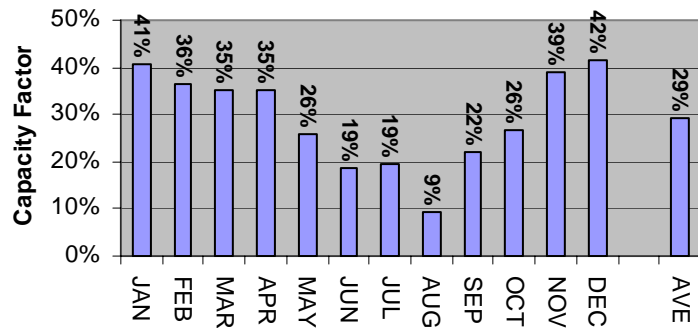


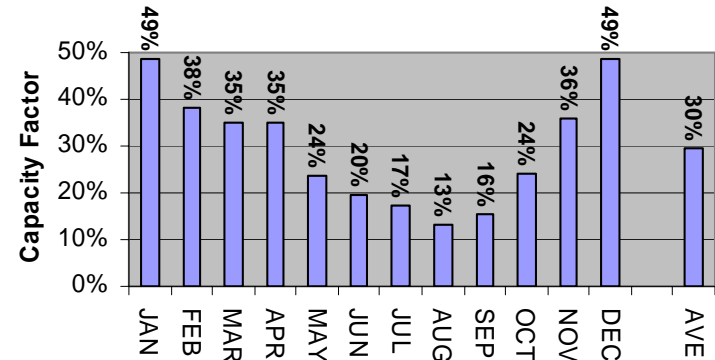
Mountaineer Windplant, WV

■ 2003-2004 Average Capacity Factor by Month and Annual Average



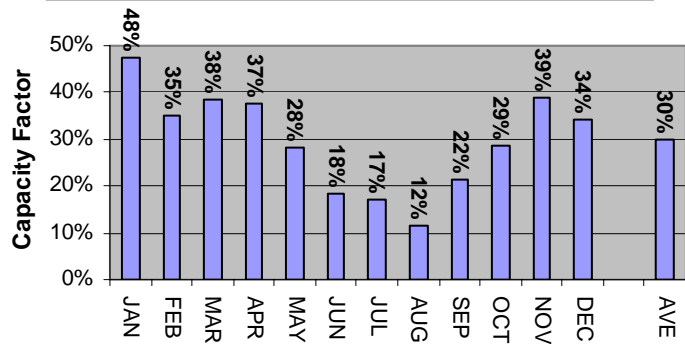
Meyersdale Windplant, PA

■ 2004 Capacity Factor by Month (Nov and Dec projected) and Estimated Annual Average



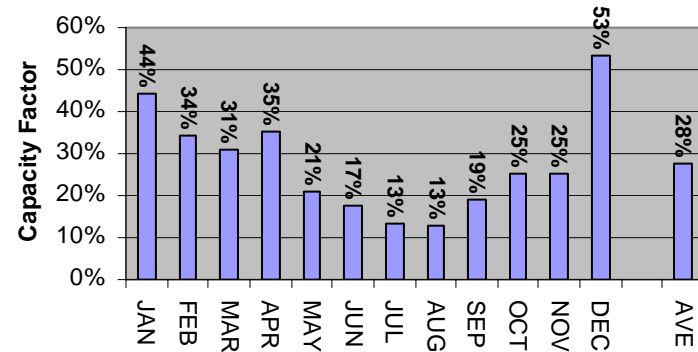
Mill Run Windplant, PA

■ 2002-2004 Average Capacity Factor by Month and Annual Average



Waymart Windplant, PA

■ 2004 Capacity Factor by Month and Annual Average



Source: USDOE's Energy Information Administration (EIA) – 906/920 Monthly Time Series Files;
http://www.eia.doe.gov/cneaf/electricity/page/eia906_920.html

Dan Boone – Feb. 8, 2005